



ELSA ERNI System

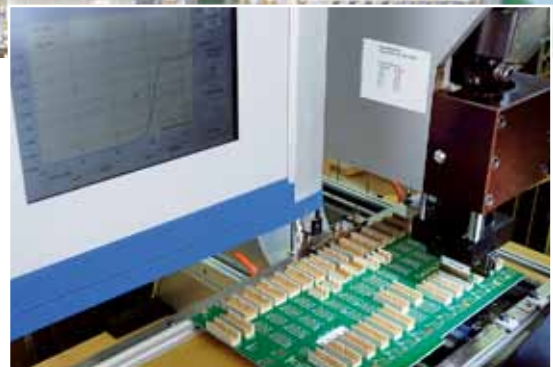


From the beginning, we have been developing key technologies in-house here at ERNI. That is how we control what we supply - from scratch: design, components, tool making, controls, processes, testing technology. This strategy has established ERNI as a global leader in the connector industry.

With ERNI, you will have access to all the resources of a specialist in connectors: Expertise gained from the data and telecommunications industry, machinery and plant controls, and many more sectors results in a synergy that will increase your performance, improve safety and reduce your costs.

By engaging ERNI's system assembly service

- Assemble any component from any manufacturer
- Customers reduce costs with ERNI products
 - Invest in press machine
 - Purchase tools
 - Employ skilled technician for PCB assembly
 - Logistics of components & PCBs
- No tooling charges when ERNI connectors are used
- Customized connector tooling available
- Production localized to customer requirement
- "Red Carpet" service of 48 hour turnaround time
- No Job is too small or too large
- ERNI's know-how in connector and systems technology
- Outstanding ERNI quality
- ERNI's logistics and strategic partners
 - PCB suppliers
 - Cable suppliers



ERNI builds our own connectors, tooling and presses which provide you the highest level of experience. Let us combine your ideas, ERNI products and our engineering experience to bring your product to reality.

A Total Solution

VERTICAL INTEGRATION

ERNI

- Press
- Tools
- Connectors
- Technology
- Quality
- Logistics

ENGINEERING

Conceptualization

- From customer idea to Statement of Work (SOW)
- Structuring
 - Connector selection
 - Form factor
 - Data architecture

System Layout

- Signal routing and optimization
- Footprint and component placement
- Power distribution and electrical safety aspects

PRODUCTION CAPABILITY

New Product Introduction

- Dedicated resources for prototyping are available

Flexible Production

- Low-volume high-mix production. No order is too small
- Customized tooling manufactured by ERNI
- Manual soldering is available

Redundant Volume Cable Production Capabilities

- Production localized to customer requirements
- IDC, discrete wire and hand soldering assemblies

Integration to Complete Sub-Rack Solutions

- Chassis available with
 - Backplane
 - Power supplies
 - Fans
 - Cooling fixtures
 - Cables
- ESD assembly line

SUPPORT

Logistics and Strategic Partners

- Supply chain optimization
- Strategic relationship with PCB and cable suppliers

Testing

- Low NRE charges. Quick test development
- Complete Electrical Net-list testing
 - Continuity
 - Isolation
 - Digital Multi-Meter
- Automated Optical Inspection detects
 - Rotated or incorrect components
 - Bent pins
 - Missing pins
 - Unseated connectors

Standards in Quality Support

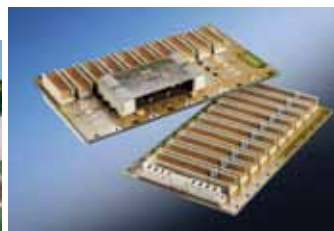
- Connector manufacturing since 1950s
- Pressfit technology since 1970s
- System assembly since 1980s



Cable assembly and enclosure



ATCA /customised backplane



CPCI /customised backplane



Flat ribbon cable assembly

ERNI EPC3X Hydro-Pneumatic Press-fit Assembly

- Maximum and minimum limit value for press-in force
- High process reliability based on press-in force
- Component specific press-in force
- Press-in force control and visualisation
- Statistics of press-in process for quality tracking
- Lowerable tool base
- Sliding table
- Database for connector and PCB data



**ERNI Asia Holding Pte Ltd**

Blk 4008 Ang Mo Kio Ave 10
#04-01/02 Techplace I
Singapore 569625
Tel +65 6555 5885
Fax +65 6555 5995
info@erni-asia.com

ERNI Beijing

No.14th, Jiuxianqiao Rd,
Chaoyang District
A2-3-A2318
Zhaowei huadeng Building
Beijing 100016, China
Tel +86 10 84799616 Ext 606
Fax +86 10 84799616 Ext 616
kcui@erni-asia.com

ERNI Shanghai

Wan Hangdu Rd, Jin'an District
20C KaiKai Plaza No. 888
Shanghai 200042, China
Tel +86 21 5238 3125
Fax +86 21 5238 3128
shlia@erni-asia.com

ERNI Shenzhen

ChuangYe Road, NanShan District
Room 319, Building 2
NanGuang City Garden
Shenzhen 518054, China
Tel +86 755 86171751
Fax +86 755 86170604
gxin@erni-asia.com

ERNI Shenyang

No.178-7-521 Shashan Street
Heping District
Shenyang 110005, China
Tel +86 13354203000
Fax +86 24 25112868
sliu@erni-asia.com

ERNI Wuhan

Room 2913, Pengcheng Times
Zhongnan Rd, Wuchang District
Wuhan 430071, China
Tel +86 27 87134701
Fax +86 27 87134701
vhou@erni-asia.com

ERNI Chengdu

No.457, Shaoling Rd
Xiyiduan, 2nd Ring Rd
Chengdu 610004, China
Tel +86 28 81403707
Fax +86 28 81403707
rhu@erni-asia.com

ERNI Nanjing

No.52, Shuiguan Qiao
Nanjing 210015, China
Tel +86 25 58632291
Fax +86 25 58632291
dyang@erni-asia.com

ERNI Taiwan

2F., No.58, Ln.253, Sec 2
Neihu Rd
Taipei City 114, Taiwan
Tel +886 919 658816
Fax +886 28791 3238
phu@erni-asia.com

ERNI Penang

No.36B, Jalan Tun Dr. Awang
Penang 11900 Malaysia
Tel +60 4 644 9688
Fax +60 4 646 1066
darren@erni-asia.com

ERNI Korea

#712 Anyang GeonSeol Tower
1112-1, Bisan-Dong
Dongan-Gu, Anyang City
Gyeonggi-Do, South Korea
Tel +82 31 440 9860
Fax +82 31 440 9861
hs.choi@erni-asia.com

ERNI Thailand

81/266 Moo 6, Lamlukka Rd
Buengkamproi, Lumlukka
Pathumthani 12150, Thailand
Tel +66 2 1538319
Fax +66 2 1538320
worawut@erni-asia.com

ERNI Delhi

Delhi, India
Tel +91 99 7162 4313
Fax +91 80 4165 5319
amit@erni-asia.com

ERNI Mumbai

Mumbai, India
Tel +91 92235 02896
rajesh@erni-asia.com

ERNI Bangalore

12/1A, 3rd Floor
17th Cross, 29th Main
JP Nagar 6th Phase
Bangalore 560078, India
Tel +91 80 4165 5393
Fax +91 80 4165 5319
hardik@erni-asia.com

www.erni.com

© ERNI Asia Holding Pte Ltd 2012 • Singapore • A policy of continuous improvement is followed and the right to alter any published data without notice is reserved.

ERNI[®], MicroStac[®], MicroSpeed[®], MiniBridge[®], MicroCon[®], MaxiBridge[®], ERmet[®], ERmet ZD[®], ERbic[®], ERNIPRESS[®], INTERact[®], WHITEspeed[®], BLUEcontact[®], Act. Connect. Perfect. [®] and ERNI WoR&D[®] are trademarks (registered or applied for in various countries) of ERNI Electronics GmbH.